



W

WINDESIGN

COLLECTION

ACCESSORIES | BAGS | CLOTHING | DINGHY HARDWARE



W

WINDSIGN

*Photo credits:
Matias Capizzano
www.capizzano.com*

Windesign® is an expanding brand which has a proven hardware range for Laser®, ILCA® and 420, a large collection of tiller extensions, dinghy trolleys, bags and a clothing collection; The MIRA series.

The extensive range of products is exported to more than 80 countries around the world. The name Windesign® is a registered trademark.

OPRY



Windesign® was founded in 2000 as brand for hardware, clothing and accessories for all dinghy sailors. In 2016 we started thinking about a full clothing collection called the "MIRA Series". In 2017 we were able to supply the first "MIRA Series" items and due to success, we have been able to develop and expand to a full clothing collection for junior and adult.

This premium clothing collection from Windesign is designed with the highest quality fabrics to provide ultimate waterproofness, durability and flexibility. Developed specially for both junior and adult sailors, this range ensures optimal performance on the water.

06

TEAMRIDERS

08

**TECHNICAL
SPECS**

10

CLOTHING

26

FOOTWEAR

28

HEADWEAR

30

ACCESSORIES

32

BAGS

36

SIZECHART





A SELECTION OF

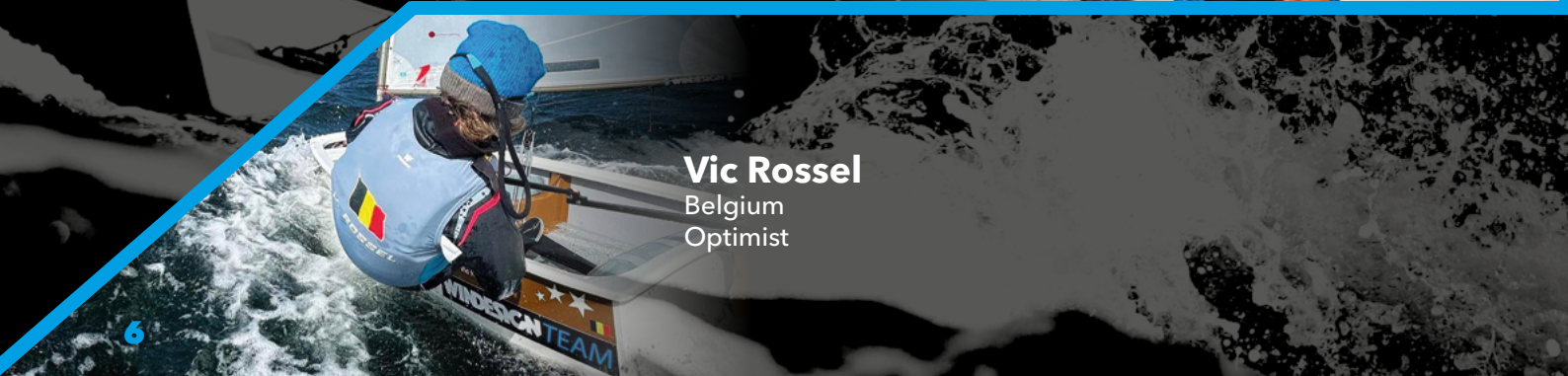
WINDESIGN MEMBERS



Léo Jean - Albert
France
Nacra



Allegra Mattos
Spain
ILCA



Vic Rossel
Belgium
Optimist

WINDTEAM MEMBERS

Francesca Ramazzotti

Italy
RS Aero / Hansa 303



Lars Ganzevles & Folkert van Surksun

The Netherlands
29er



Luísa Peres

Portugal
ILCA



TECHNICAL SPECS



This premium clothing collection from Windesign is designed with the highest quality fabrics to provide ultimate waterproofness, durability and flexibility. Developed specially for both junior and adult sailors, this range ensures optimal performance on the water.

NEO-SKIN

A three-layer fabric consisting of a nylon water repellent outer, a lightweight stretch mid layer and a soft nylon inside layer.



W-Flex stands for our neoprene flexibility. The combination of high quality neoprene and the production technique provides the flexibility that every sailor is looking for.

POLAR

This soft fleece fabric offers the best comfort and warmth for your skin. It has excellent insulating and moisture-wicking characteristics, while also having good breathability.

RIPSTOP

The unique grid pattern of thicker threads woven into the fabric helps prevent small tears or punctures from expanding, enhancing overall durability.

AIR MESH

Say goodbye to sweat patches and stickiness with the AIR MESH moisture-wicking and breathable characteristics, ensuring full day comfort and freshness.

STRETCH-SKIN

This stretchy fabric contributes to comfort, performance and functionality for the perfect fit on the water.

MESH#LINING

Comfortable lining developed to avoid sticky sweat feelings and to make changing clothes easier. Keeps you dry and ready to race!

UV50+ SKIN

Protect yourself against the sun with our UV50+SKIN products. The UV50+ fabric provides maximum sun protection.

2 LAYER

A two-layer fabric construction, crafted with a 75D twill polyester pongee outer layer and a PU coated inner layer. This unique combination ensures a waterproof rating (W/P) of 10,000 mm and a breathability rating (MVP) of 10,000 g/m²/24hr. Stay dry and comfortable no matter the circumstances.

TERRY

Quick-dry, soft and hairy fabric that offers comfort and warmth to your skin. This fabric has many protruding loops of thread which can absorb large amounts of water.



Ratings indicating the level of waterproofness (W/P) and breathability (MVP).

3 LAYER

A three-layer fabric construction, crafted with a 75D twill polyester pongee outer layer, a PTFE membrane and bonded with a 30D tricot inner layer. This innovative composition guarantees a waterproof rating (W/P) of 20,000 mm and a breathability rating (MVP) of 15,000 g/m²/24hr, assuring you stay dry and comfortable in all weather conditions.



MIRA
SERIES

**3MM NEO-SKIN LONG JOHN / LONG JANE
UNISEX**

FEATURES

- 3 mm Neo-Skin fabric
- Velcro shoulder strap
- Horizontal pee zipper (long john)
- W-Flex technology
- Flatlock stitching
- Reinforced knee and seat panels
- High quality stitched leg seals



NEO-SKIN



EX2525

EX2525J



EX2524J

SIZING

EX2524J

- JS, JM, JL, JXL

EX2525J

- JS, JM, JL, JXL

EX2525

- S, M, L, XL

2.5MM NEO-SKIN TOP UNISEX

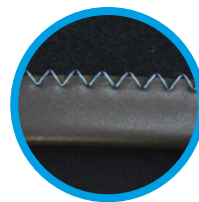
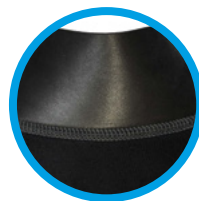
FEATURES

- 2.5 mm Neo-Skin fabric
- Polar inner lining
- Soft smooth neoprene waist
- Soft touch glideskin neck
- W-Flex technology
- Flatlock stitching
- High quality stitched wrist seals



POLAR

NEO-SKIN



SIZING

EX2526J

- JS, JM, JL, JXL

EX2526

- S, M, L, XL

10K COMFORT SPRAYTOP UNISEX

FEATURES

- Waterproof W/P 10.000 mm
- Breathable 10.000 g/m2/24hr
- Thin and lightweight fabric
- Mesh inner lining
- Adjustable neck fastening
- Stretch PU seal & adjustable cuffs
- Neoprene waist with Velcro fastening



MESH##LINING



2 LASER

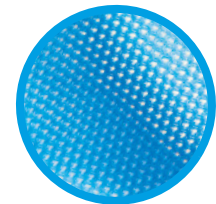
SIZING

EX2445J

- JS, JM, JL, JXL

EX2445

- S, M, L, XL



10K HOODED JACKET UNISEX

FEATURES

- Waterproof W/P 10.000 mm
- Breathable 10.000 g/m2/24hr
- Thin and lightweight fabric
- Polar inner lining
- Stretch PU seal & adjustable cuffs
- Adjustable elastic cord at bottom hem
- Adjustable hood with reinforced peak



POLAR



2 LASER

SIZING

EX2447J

- JS, JM, JL, JXL

EX2447

- S, M, L, XL



3 LAYER PERFORMANCE TROUSERS UNISEX

FEATURES

- Extreme waterproof W/P 20.000 mm
- Extreme breathable 15.000 g/m2/24hr
- Polar fleece pockets with YKK® water repellent zipper
- YKK® two-way front zipper
- Adjustable waist band
- Guard with drainage for added water protection
- 1000D Cordura® reinforced knees and seat
- Large velcro® closable front leg pocket

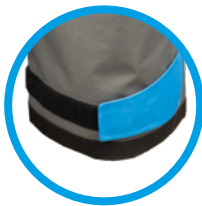


MIRA
SERIES

POLAR



3 LAYER



SIZING

EX2442

- XS, S, M, L, XL

COMFORT HIKING TRAPEZE HARNESS UNISEX

FEATURES

- Full back support
- Eight points spreader bar fixation
- Comfortable and adjustable leg straps
- Adjustable shoulder strap release system
- Neoprene covered stainless steel buckles
- PVC coated 600D polyester shell
- Stainless steel spreader bar
- Heavy duty rear
- Not allowed for official class events



SIZING

EX2560

- S, M, L, XL, XXL



**RIPSTOP SIDE ZIP BUOYANCY AID
UNISEX**

FEATURES

- Ripstop outer fabric
- Side zip entry (YKK)
- Double sided Velcro waist closure
- Padded shoulders with reflection
- Self-draining front pocket
- Non-slip grip on the inside
- Junior sizes includes crotch strap
- EN ISO 12402-5 50N approved
- Not USCG approved



RIPSTOP



SIZING

EX2521J

- JS, JM, JL

EX2521

- S, M, L, XL

NEO-RASH SHORTS UNISEX

FEATURES

- Backpanel: 1.5 mm Neo-skin fabric
- Frontpanel: Flexible rash
- Reinforced in seat panel
- Adjustable waist band
- Japanese Velcro
- Flatlock stitching
- UV50+ protection



NEO-SKIN

UV 50+ SKIN



SIZING

EX2565J

- JS/JM, JL/JXL

EX2565

- S, M, L, XL



NEO-RASH PANTS UNISEX

FEATURES

- Reinforced knee and seat panels
- Adjustable waist cord
- Wide elastic waist band
- Flatlock stitching
- UV50+ protection



NEO-SKIN

UV 50+ SKIN



SIZING

EX2567J

- JS/JM, JL/JXL

EX2567

- S, M, L, XL



**KEVLAR KNEEPADS
UNISEX****FEATURES**

- Kevlar protection
- Elastic adjustable straps
- Double secured Velcro fastening
- Flexible neoprene padding
- Ergonomical designed
- Flatlock stitching

**NEO-SKIN****SIZING****EX2545J**

- J

EX2545

- S/M, L/XL



SHORT FINGER GLOVES UNISEX

FEATURES

- Amara grip panel
- UV50+ protection
- Comfortable knuckle panel
- Velcro secured wrist
- Comfortable stretch fabric
- Quick dry fabric
- Easy pull on strap



UV50+ SKIN

STRETCH+SKIN



SIZING

EX2550J

- JS, JM, JL

EX2550

- S, M, L, XL



JUNIOR HIKING PANTS **UNISEX**

FEATURES

- Stiff polyester battens
- Velcro closures on legs and waist
- Elastic sections to increase comfort



SIZING

EX2500

- JS, JM, JL



AIRMESH LONG SLEEVE RASH TOP UNISEX

FEATURES

- UV50+ protection
- AIRMESH moisture-wicking armpit panel
- Prevents sweating

SIZING

EX2542J

- JS, JM, JL, JXL

EX2542

- S, M, L, XL



UV50+ SKIN

AIR MESH



RASH TANKTOP UNISEX

FEATURES

- 4 colors
- UV50+ protection
- Non-slip grip on the inside

SIZING

Junior

EX2532JO

EX2532JR

EX2532JB

EX2532JG

Adult

EX2532O

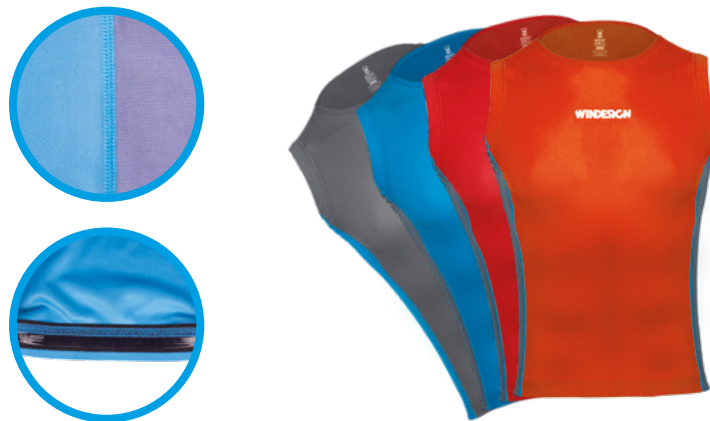
EX2532R

EX2532B

EX2532G



UV50+ SKIN



QUICK DRY TERRY PONCHO **UNISEX**

FEATURES

- Side openings to get dressed easily
- Comfortable and warm Terry skin
- Kangaroo pocket
- Easily absorbs water
- Double layered hood
- Double layered arm openings
- Longer and double layered back edge
- 300gsm quick dry Terry microfiber



TERRY

SIZING

EX2480J

- Junior

EX2480

- Adult



QUICK DRY TERRY BOOT TOWEL 120 X 20CM

FEATURES

- Quickly absorbs water out of your boots
- Soft and Terry skin
- Hang loop
- 300gsm quick dry Terry microfiber

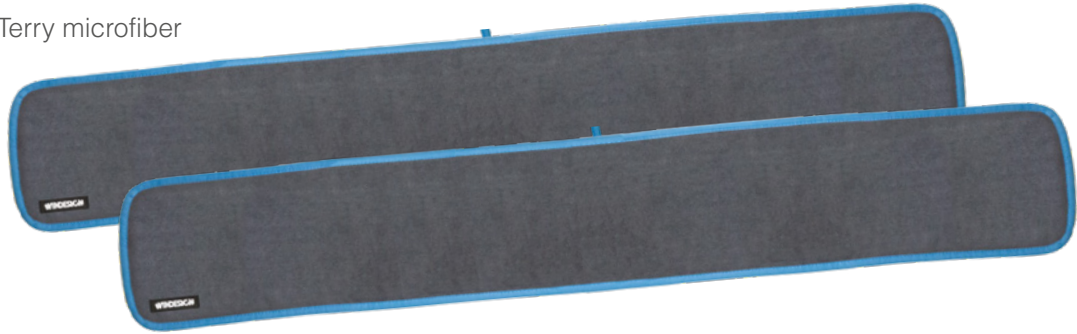


TERRY

SIZING

EX2490

- One size



2 MM NEOPRENE SHOES UNISEX

FEATURES

- 2 mm Neo-Skin fabric
- Flatlock stitching
- Pre-shaped
- Pull strap

NEO-SKIN

SIZING

EX2470

- S, M, L, XL



5 MM NEOPRENE BOOTS UNISEX

FEATURES

- 5 mm Neo-Skin fabric
- Durable non-slip sole
- High quality YKK zipper
- Zip protection flap
- Lightweight



OTS

3 MM NEOPRENE SHOES UNISEX

FEATURES

- 3 mm Neo-Skin fabric
- Flatlock stitching
- Double stabilized sole
- Adjustable pull string for snug fit

SIZING

EX2450

- 32 - 48 EU



SIZING

EX2460

- 32 - 48 EU



SUN PROTECTION VISOR
UNISEX**FEATURES**

- Plastic reinforced pre-curved peak
- Mesh fabric with tricot backing
- Minimal water absorption
- Adjustable hook/loop closure
- Comfortable 3-layer cotton sweat band

**SUN PROTECTION CAP**
UNISEX**FEATURES**

- Plastic reinforced pre-curved peak
- Melange fabric
- Breathable mesh back panel
- Adjustable hook/loop closure

**EX2581B****EX2581C****EX2580**

FLOATING KNITTED BEANIE
UNISEX

FEATURES

- Floatable
- Comfortable and warm
- Adult size with roll-over



EX2582

EX2582J

2 MM NEOPRENE BEANIE
UNISEX

FEATURES

- 2 mm Neo-Skin fabric
- Comfortable and warm
- Capleash attachment strap



NEO-SKIN



EX2584

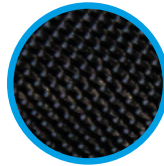
WEBBING CAPLEASH LENGTH 30 CM



EX2596

FEATURES

- Durable webbing
- Crocodile clips



FLOATING KEY CHAIN 85x40x15 MM



EX2588

FEATURES

- Floatable
- Personalizable with name and sail no.
- 3-layers structure

FLOATING SUNGLASSES STRAP LENGTH 76 CM



EX2597



FEATURES

- Floatable
- Comfortable
- Easy to attach



PHONE/CAMERA BAG 21x11 CM



EX2578

FEATURES

- Waterproof
- Zip lock / Velcro closure
- Inside: 9x17 CM

TOOL/TOILET BAG
 25x16x16 CM

EX2571
FEATURES

- Multi purpose tool/toilet bag
- Inside mesh pocket
- Easy to carry handle
- Compact


DOCUMENT BAG
 32x25 CM

EX2575
FEATURES

- Splashproof fabric
- Compartment for A4 documents
- Ideal for measurement forms

PX BRIEFCASE
 40x30x5 CM

EX2572
FEATURES

- PX10 sailcloth
- Four zipped compartments
- Compartment for laptop or tablet
- Internal accessory pockets


PENCIL CASE
 24x12 CM

EX2576
FEATURES

- Splashproof fabric
- Compartment for pencils

ROLLER BAG 88 L

66x37x36 CM

FEATURES

- Waterresistant 1000D PVC cloth
- Velcro PX-10 sailcloth outside pockets
- Large main compartment
- Three inner pockets (1 with mesh)
- 7 cm wheels
- Two grab handles
- Removable shoulder strap
- Extendable luggage handle

**EX2622****ROLLER BAG 124 L**

74x43x39 CM

FEATURES

- Waterresistant 1000D PVC cloth
- Velcro PX-10 sailcloth outside pockets
- Large main compartment
- Three inner pockets (1 with mesh)
- Large 11 cm wheels
- Two grab handles
- Removable shoulder strap
- Extendable luggage handle

**EX2624**

DRY BAG

5 L, 15 L, 40 L

FEATURES

- Waterproof
- Roll top buckle closure
- Semi transparent ripstop
- Air release valve (only on the EX2610)
- Detachable strap (only on the EX2610)



EX2605



EX2608



EX2610

STORAGE TRAVEL BAG 70 L

66x35x30 CM

FEATURES

- Thick 200 gsm woven pp
- Splashproof lamination
- Heavy duty handles
- Big zipper on top and 1 side



EX2615



DUFFEL TRAVEL BAG 30 L

45x30x30 CM

FEATURES

- Waterresistant 600D polyester
- Backpack and duffelbag in one
- Internal padded laptop compartment
- Internal tablet compartment
- 3 grab handles
- Cable pass through
- Hand luggage allowed
- 3 mesh pockets and 2 outside pockets
- Adjustable sternup strap

**EX2626**

ROLL TOP DUFFEL BAG 45 L

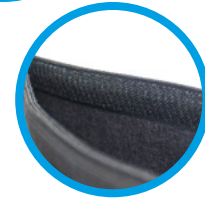
62x30x30 CM

FEATURES

- Waterresistant 600D polyester
- Zip front pocket
- Nametag pocket
- External mesh pockets
- Velcro seal
- 2 grab handles
- Waterproof



EX2628



DRY BACKPACK 40 L

50x33x25 CM

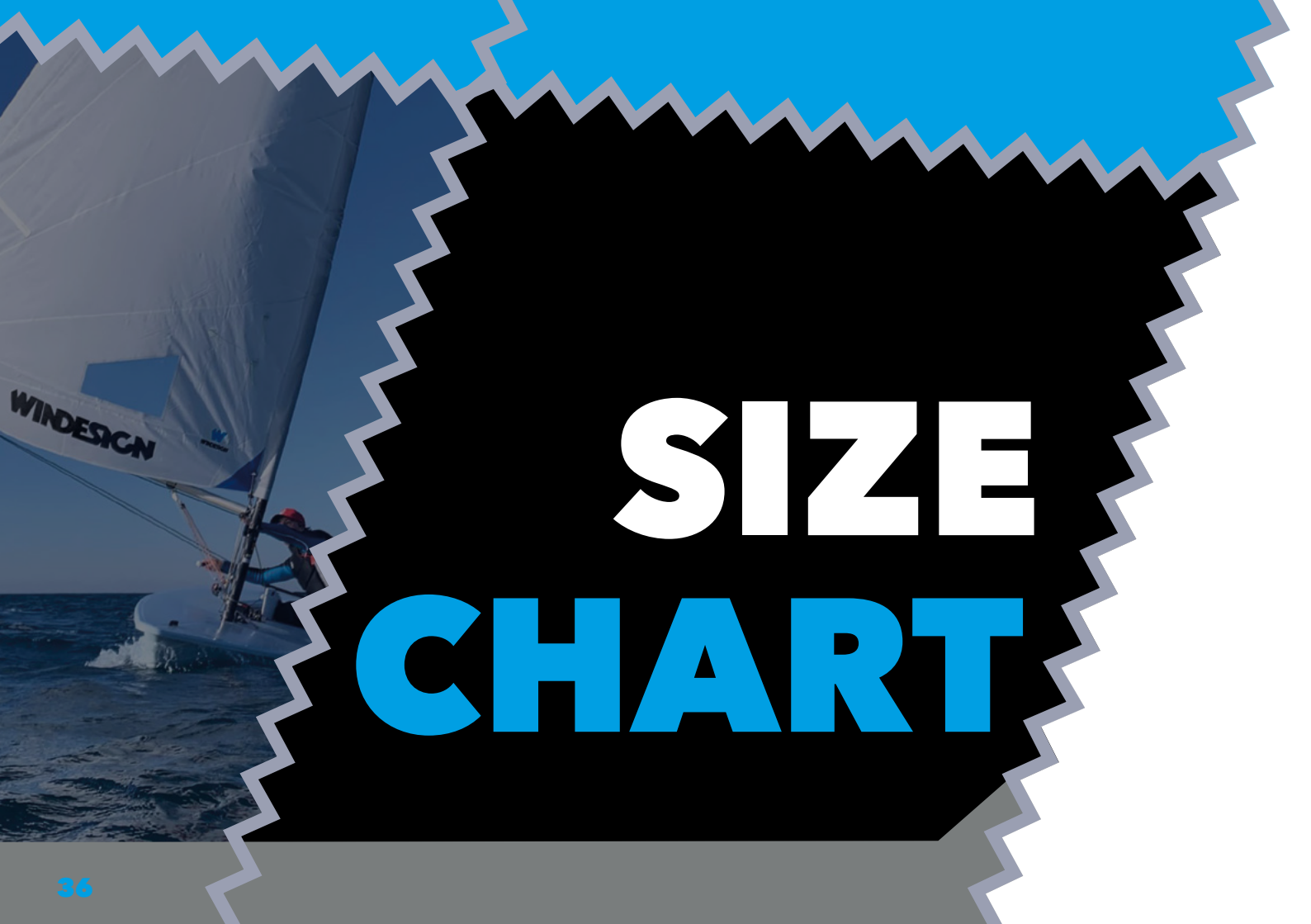
FEATURES

- Waterresistant 600D polyester
- Three compartments
- Waterresistant zippers
- Internal accessory pockets



EX2620





SIZE CHART

EX2525 / EX2524J - 3MM NEO-SKIN LONG JOHN / LONG JANE UNISEX

EX2526 - 2.5MM NEO-SKIN TOP UNISEX

EX2445 - 10K COMFORT SPRAYTOP UNISEX

EX2447 - 10K HOODED JACKET UNISEX

SIZE	JS	JM	JL	JXL	S	M	L	XL
HEIGHT CM	128-136	137-145	146-154	155-162	163-170	171-178	179-186	187-190
WAIST CM	57-60	61-64	65-68	69-73	74-79	80-86	87-94	95-102
CHEST CM	64-69	70-75	76-82	83-89	90-96	97-103	104-111	112-119

EX2442 - 3 LAYER PERFORMANCE TROUSERS

SIZE	XS	S	M	L	XL
HEIGHT CM	158-165	166-173	174-181	182-185	186-190
WAIST CM	70-74	75-80	81-87	88-94	95-102
CHEST CM	85-89	90-94	95-102	103-110	111-119

EX2521 - RIPSTOP SIDE ZIP BUOYANCY AID UNISEX



JS	75-80	30-40	35
JM	80-85	30-40	35
JL	85-90	35-45	35
S	90-95	40-60	40
M	95-105	60-70	45
L	105-115	70+	50
XL	115-125	70+	50

EX2560 - COMFORT HIKING TRAPEZE HARNESS UNISEX

SIZE	S	M	L	XL	XXL
WAIST CM	71-76	76-81	81-86	86-92	92>
WAIST INCH	<30	30-32	32-34	34-36	36>

EX2565 - NEO-RASH SHORTS UNISEX EX2567 - NEO-RASH PANTS UNISEX

SIZE	JS/JM	JL/JXL	S	M	L	XL
HEIGHT CM	128-145	146-162	163-170	171-178	179-186	187-190
WAIST CM	57-64	65-73	74-79	80-86	87-94	95-102

EX2550 - SHORT FINGER GLOVES UNISEX

SIZE	JS	JM	JL	S	M	L	XL
CIRCUMFERENCE HAND CM	14.5-15.5	15.5-16.5	16.5-17.5	17.5-19	19-21.5	21.5-23	23-24.5

EX2500 - JUNIOR HIKING PANTS UNISEX

SIZE	JS	JM	JL
WAIST CM	53-67	60-67	69-86
WAIST INCH	20-26	24-30	27-34
YEARS	9-11	11-13	13-15

EX2542 AIRMESH LONG SLEEVE RASH TOP UNISEX

SIZE	JS	JM	JL	JXL	S	M	L	XL
HEIGHT CM	128-136	137-145	146-154	155-162	163-170	171-178	179-186	187-190
WAIST CM	57-60	61-64	65-68	69-73	74-79	80-86	87-94	95-102
CHEST CM	64-69	70-75	76-82	83-89	90-96	97-103	104-111	112-119

EX2470 - 2 MM NEOPRENE SOCKS UNISEX

SIZE	S	M	L	XL
UK	1-3	4-6	7-9	10-12
EUROPE	32-35	36-39	40-44	45-48
USA MENS	1.5-3.5	4.5-6.5	7.5-9.5	10.5-12.5

EX2450 - 5 MM NEOPRENE BOOTS UNISEX EX2460 - 3 MM NEOPRENE SHOES UNISEX

SIZE	J1	J2	J3	J4	J5	XS	S	M	L	XL	2XL	3XL
UK	1	2	3	4	5	6	7	8	9	10	11	12
EUROPE	32-33	34	35	36	37-38	39	40-41	42	43-44	45	46	47-48
USA MENS	1.5	2.5	3.5	4.5	5.5	6.5	7.5	8.5	9.5	10.5	11.5	12.5

EX2480 - QUICK DRY PONCHO UNISEX

SIZE	JUNIOR	ADULT
HEIGHT CM	128-162	163-190
WAIST CM	57-73	74-102



WINDESIGN

DESIGNED IN THE NETHERLANDS

FOLLOW US!



**WINDESIGN
SAILING.COM**

